


Press Kit

MAISONS

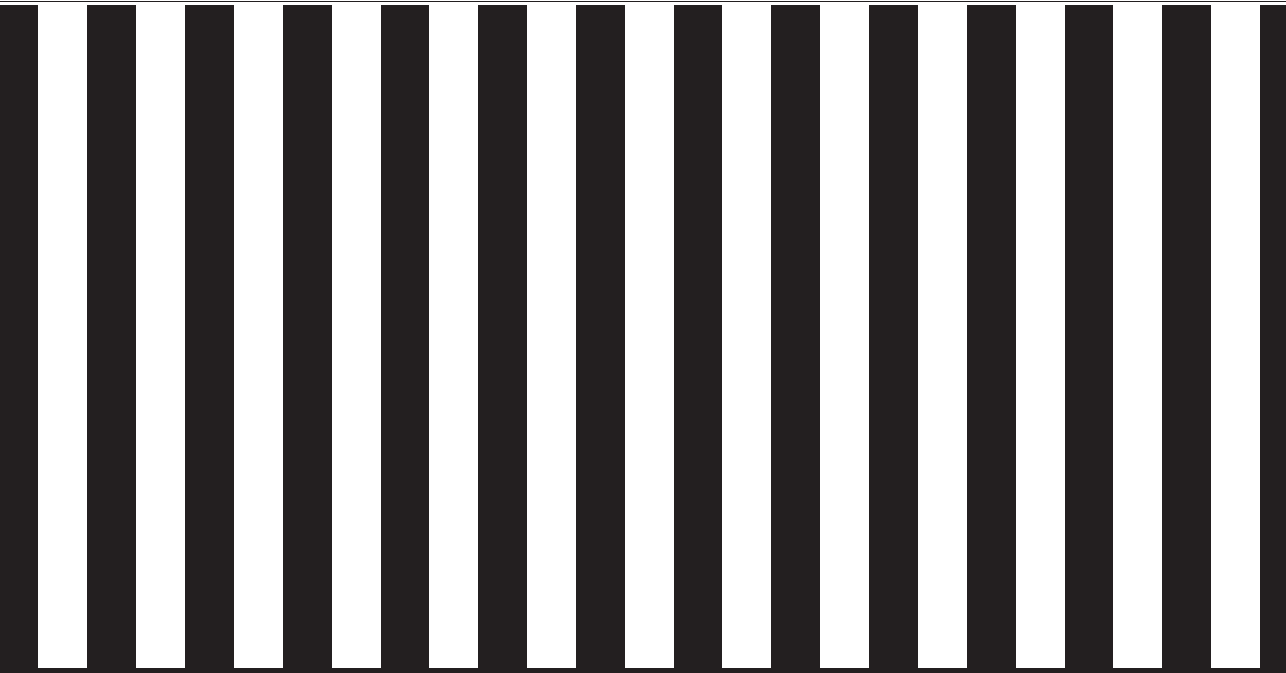
D U M O N D E

X
Chantal Thomass



The Chantal Thomass Capsule Collection
for Maisons du Monde

Soooo Chic, Soooo Glam, Soooo Parisian



Available September 10, 2018



MAISONS
DU MONDE

x
Chauteau Thomas

CONTENTS

THE STORY OF A BEAUTIFUL COLLABORATION P. 6
THE SPIRIT OF THE COLLECTION P. 8
THE AMBIANCES, THE PRODUCTS..... P. 10
WHERE AND WHEN TO FIND THE COLLECTION?.. P. 14

**Spotlight on the capsule collection
Chantal Thomass for**



Soooo Chic, Soooo Glam, Soooo Parisian

The famous fashion designer decided to collaborate with Maisons du Monde, revisited her designs and has created an exclusive collection of furniture, home accessories and lighting that's full of pizzazz.

Starting on 10 September,

Come discover this exciting collection featuring stark black and white, velvet and a subtle touch of pink!



You will absolutely love it!

The story of a wonderful collaboration

THE "CHANTAL THOMASS FOR MAISONS DU MONDE" CAPSULE COLLECTION WAS BORN FROM A TRUE MEETING OF THE MINDS BETWEEN THE IMPERTINENT AND GLAMOROUS PARISIAN FASHION DESIGNER AND THE STYLISTS OF A BRAND EMBODYING INSPIRATIONAL AND CREATIVE DESIGNS.

Their shared goal:

open the field of possibilities, play around with Maisons du Monde styles and invent a new collection that fully expresses the Fall-Winter 2018 trends.

"Maisons du Monde is a fantastic playground for a designer like me. With the variety of styles and products, the pizzazz and inventiveness of the brand, I had so much fun creating this collection. And I am very proud and honoured, since this is Maisons du Monde's first capsule collection. So happy to be part of this debut!"

Chantal Thomass, Fashion Designer

"Chantal Thomass imbued our collections of furniture and home accessories with her unique style. A very Parisian spirit, black and white, with a touch of pink! It's like being in Chantal's apartment!"

The collaboration with our stylists was exciting and rewarding. Creativity is what matters in both fashion and design, and here the combination results in the very best decorative style!"

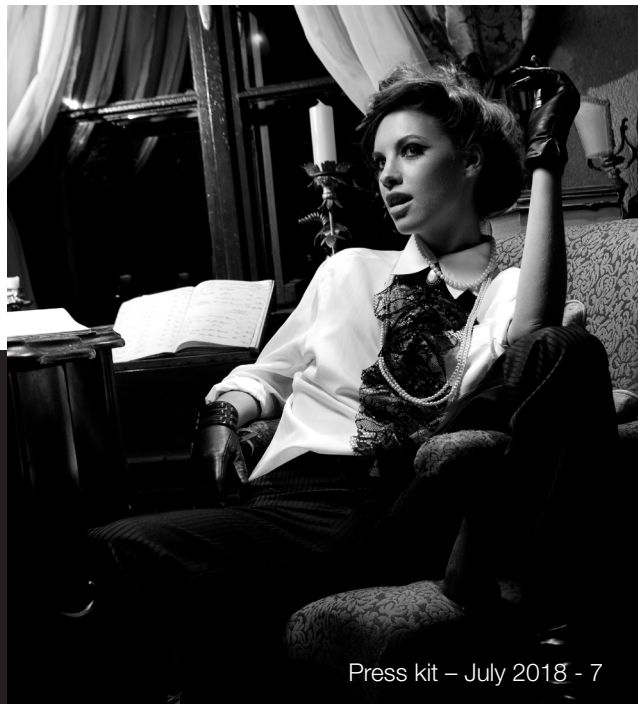
**Anne-Laure Couplet,
Global Brand Director
Maisons du Monde**



All about Chantal Thomass

Fashion designer Chantal Thomass began her career at the age of 20 at the famous fashion house Dorothee Bis. She then created her own brand, which she called Ter et Bantine, breaking with the usual fashion codes by introducing lingerie into ready-to-wear fashion shows. In 1975, she created her eponymous brand featuring glamorous and refined collections, where the creations and materials (silk, lace, lycra) exalt the beauty of women. The brand then diversified its business with the launch of a line of fragrances, a range of accessories and a line of beauty products. Passionate about design, Chantal Thomass began collaborating with other businesses, and now, with Maisons du Monde, is launching a line of chic, glam and Parisian furnishings and home accessories. With Chantal Thomass, fashion and home decor make beautiful harmony.

Let's Create With Chantal Thomass



The spirit of the collection

CLOSE YOUR EYES ... NOW OPEN THEM:
YOU ARE IN CHANTAL THOMASS'S APARTMENT...

A chic, glam and Parisian spirit, with refined mouldings, a note of impertinence featuring black and white, a touch of pink, delicate velvet and silky satin... the atmosphere is resolutely stylish and elegant. The furnishings are illuminated by the decorative accessories paired with them. The style is in the details: the gueridon table featuring a cheeky high heel, the finely worked stucco, the bold two-tone furniture and mirrors...

There's no doubt about it, you will absolutely adore this decor!



GLAMOUR
FRINGE
PARISIAN
BOUDOIR
PINK
ICONIC
FASHION
TUX
BLACK AND
WHITE



The ambiances, the products

For a chic dinner

THE DINING ROOM IS THE NEW
LOUNGE...
THE DINING ROOM IS
DECORATED LIKE A BOUDOIR...
AND CAN BE DRESSED UP FOR
A CHIC DINNER.



Chantal Thomass
Louis Chair
€199



Chantal Thomass Buffet
€399



Chantal Thomass
Mirror
€84⁹⁹

The moulding on
the bookcase and
mirror gives these
pieces an elegant
and modern look.



Chantal Thomass
Dining Table
€299



Chantal Thomass Plate
starting at
€4⁵⁹

The decorative accessories, lighting and tableware illuminate the room with an elegant harmony.



The two-tone Black and White line revisits the classics and adds a touch of pizzazz.



Chantal Thomass
Cabinet
€350



Chantal Thomass
Cabriole Chair
€230



Chantal Thomass
Tea Cup and Saucer
€6⁹⁹



Chantal Thomass
Paris Roofs Candle
€84⁹⁹



For a day spent studying or lazing around

THE LOUNGE BY CHANTAL THOMASS IS A PLACE WHERE YOU CAN READ, DAYDREAM, CHAT, HAVE A DRINK, OR WORK IF YOU LIKE. IN SHORT, A PLACE TO LIVE YOUR LIFE, WHERE ELEGANCE RHYMES WITH IRREVERENCE.

Chantal Thomass
Heart Lamp

€24⁹⁹



Chantal Thomass
Sofa

€799



The black and white furnishings coordinate beautifully with the velvet and satin sofas.

Chantal Thomass Books End
Table

€99⁹⁹



Chantal Thomass
Moulding rug

€229



Chantal Thomass
Romance Mirror

€139



Chantal Thomass
Silhouette Cushion

€16⁹⁹

Chantal Thomass
Gueridon Table

€39⁹⁹

Armchair
Chantal Thomass

€450



Chantal Thomass
Secretary

€350



Chantal Thomass
Paris Roofs Frame

€5⁹⁹



Chantal Thomass
Coffee Table

€230



Where and when
to find the collection?

*The collection will be available
from 10 September to 31 December 2018.*



The collection features some fifty furnishings and home accessories designed by Chantal Thomass for Maisons du Monde! Find the pieces of this collection in all Maisons du Monde stores in Europe and online at www.maisonsdumonde.com

To find out more, come and discover the entire collection on 6 September at the Autumn-Winter press event, where you'll be able to talk with Chantal Thomass and Anne-Laure Couplet, Global Brand Director at Maisons du Monde.

In the meantime, interviews and photos are available on request. Contact Clémentine and Vanessa at
cprat@maisonsdumonde.com - +33 (0)2 51 79 54 08
vguillaumont@maisonsdumonde.com - +33 (0)2 51 71 17 92

Let's Create
With Chantal Thomass

